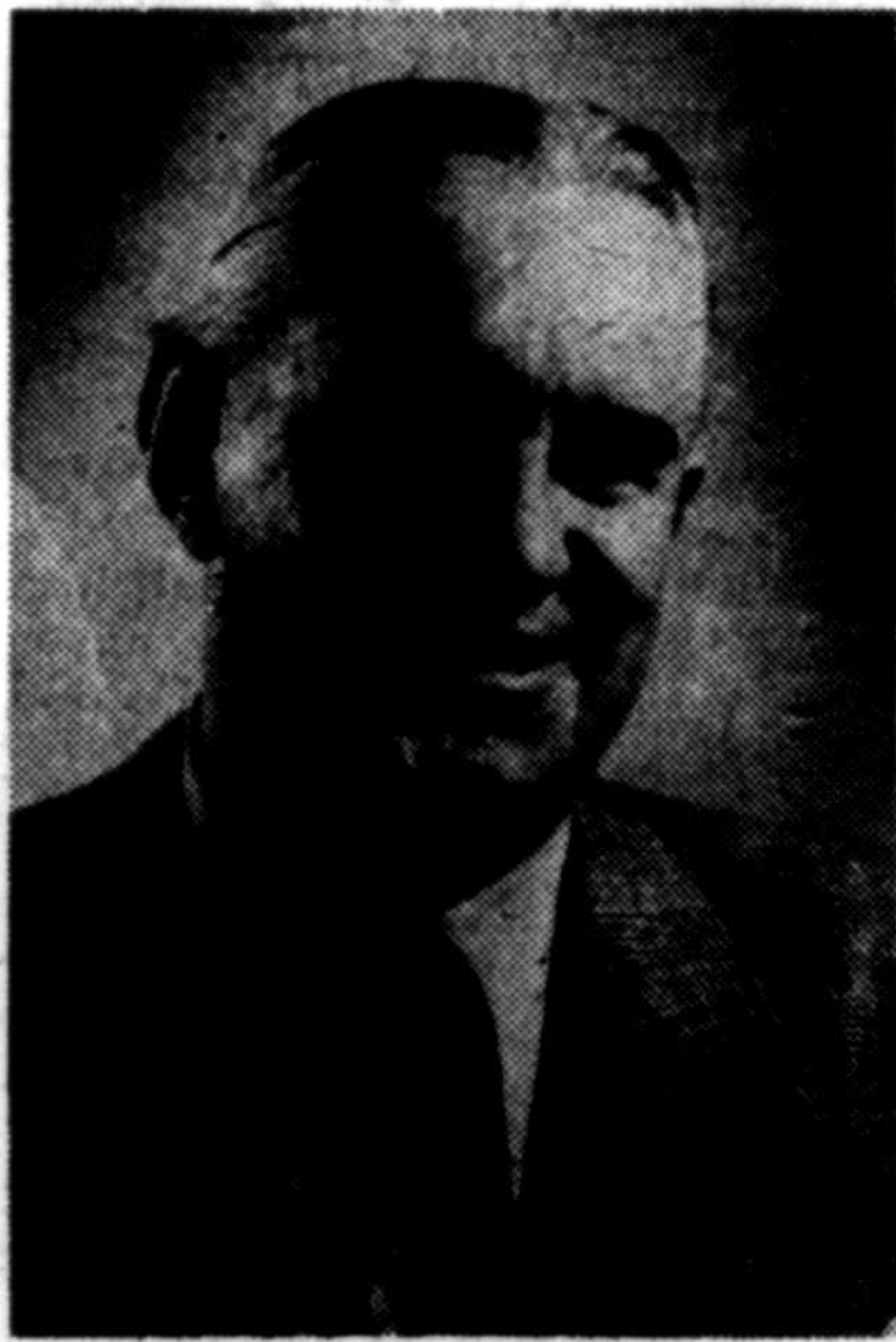


Melville J. Courson, Palmdale Leader Passes Suddenly

Antelope Valley lost one of its most influential citizens with the passing of Melville J. Courson last Thursday. He died in the veteran's hospital at Sawtelle.

A prominent civic leader for over ten years, Courson was actively associated with many community projects, and was noted for his highly successful promotional work for the Palmdale



MELVILLE COURSON

area.

He was instrumental in making the first contacts which eventually led to the establishment of a Lockheed Aircraft Corporation plant at the Palmdale Airport in 1951.

Courson was born in St. Louis, Mo., where his father and uncle were connected with the municipal water department. He attended school in that city, completing his education at St. Louis University.