

# Dr. Krauss dies while driving in Lancaster

Dr. John Krauss, 60-year-old Palmdale physician and civic leader is dead of an apparent heart attack.

Krauss died at 10:11 a.m. yesterday at Antelope Valley Medical Center, Lancaster, about 40 minutes after a heart seizure struck him as he was driving his car near Sunnydale School in Lancaster.

The former Palmdale city councilman was apparently headed west on Ave. J-8 and suffered the seizure as he approached the intersection at J-8 and 12th St. W. The car rolled through the intersection, apparently out of control, and veered north slightly and bounded over the curb into the Sunnydale School parking lot where it slammed into a parked car owned by Betty Kiyono, a Sunnydale teacher. The force of the impact shoved the Kiyono vehicle into another auto belonging to Dan Coon, also a Sunnydale teacher. There was only minor damage to the three vehicles.

Classes at Sunnydale had already commenced and there was no children on the sidewalks or in the parking lot at the time of the incident.

A nearby resident witnessed the Krauss vehicle roll through the posted intersection and she said she first thought the vehicle was unoccupied because she could not see Krauss slumped over on the front seat.

Krauss's death was the third traffic-related death in Antelope Valley since last weekend began.

Shortly before 7:30 p.m. last Saturday, Keith A. Colby, 31, of 44266 Hanstead, Lancaster, died of apparent head injuries after he went out of control on a motorcycle while riding north in the 43600 block on Stanridge in Lancaster.

According to Los Angeles Sheriff's Department investigators, the motorcycle bounced over the east curb and skidded into a motorcycle trailer. Colby received massive head injuries from the impact with the trailer and the motorcycle skidded further and struck a nearby block wall.

The victim was dead on arrival at Antelope Valley medical Center, Lancaster, at 7:35 p.m.

Funeral services for Colby are pending at Halley-Olsen Funeral Chapel, Lancaster.

Colby was a member of the local Modified Motorcycle Association chapter and according to sheriff's deputies the group was working on a float for the Quartz Hill Almond Blossom Festival Parade Sunday. Deputies said Colby had rode to his home, 44225 Hanstead, and was returning to the work party site about four blocks from the accident scene when the mishap occurred.

Earlier Saturday, Donna M. Hamblin, 26, of 1127 W. Ave. J-14, Lancaster, was found dead in her car after it apparently was driven past a road closure sign on Ave. L, struck a dirt embankment, then continued airborne about 50 feet and crashed on its front end.

The wreckage and the accident victim was found by passers-by and according to investigating deputies Hamblin apparently died of head and chest injuries several hours before.

Graveside services for Mrs. Hamblin are set for 2 p.m. today, Feb. 26, at Joshua Memorial Park, Lancaster.

Elsewhere around Antelope Valley, traffic injuries were light and no other serious accidents were reported.

Dr. Krauss was born May 26, 1919, in Berrier Springs, Mich.

and received his Bachelor's degree from Union College in Lincoln, Neb. in 1941. He received his medical education at Loma Linda University in Loma Linda, Calif. and served his internship at Quincy City Hospital in Quincy, Mass.

After his discharge from the US Army in 1947 he came to the Valley and joined his practice with that of Dr. W.R. Senseman, with whom he worked until 1949.

He has been a member of the staff of Antelope Valley Hospital since the hospital opened in 1955. He was a member of the courtesy staff, and left the active staff and joined the associate staff in 1970.

He was a founder of Palmdale

General Hospital, serving as a general practitioner since it opened March 22, 1965. He also had worked at Lancaster Community Hospital since its founding in 1964 and at Mira Loma Hospital's outpatient clinic since July 1, 1979. He was a member of the Los Angeles County Medical Association.

Active in Palmdale city government, Krauss was appointed to the Palmdale City Council in 1967 to fill the unexpired term of Dr. Robert St. Clair, who resigned to pursue his work as a member of the Palmdale School District Board of Trustees. He served on the council until he was defeated in 1976.

That year he was appointed to the Palmdale Civic Authority. He served on the PCA until September 1978, when he and Dr. Lawrence Kemper were appointed to the Palmdale Planning Commission to fill the expired terms of Bob Sorenson and Murray Pond. He was a Planning Commissioner at the time of his death.

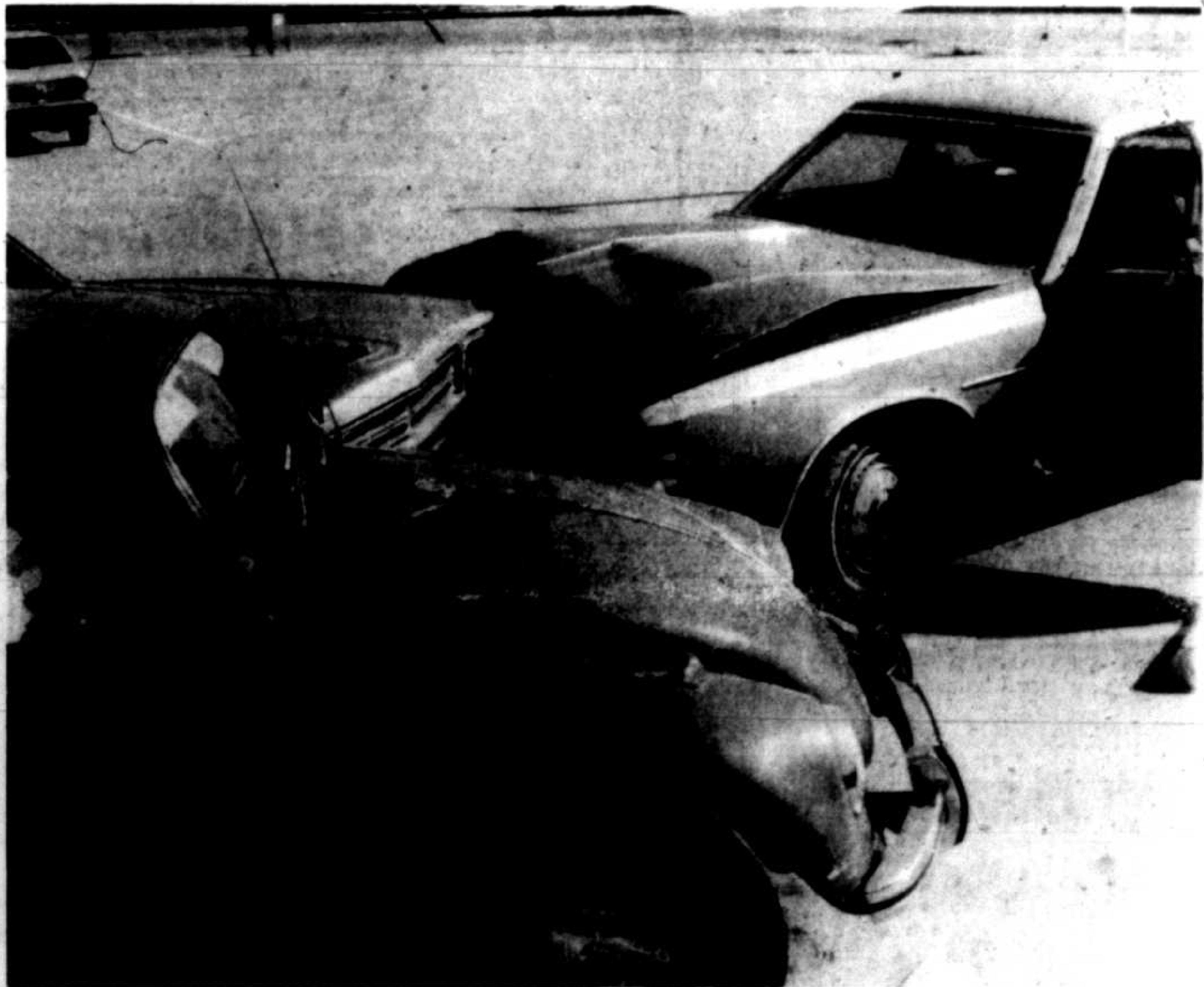
Krauss was also active in the Palmdale Rotary Club, of which he is a past president; and the Elks and Moose Lodges. He was also a Mason.

The flags at Palmdale city hall flew at half-staff Monday in tribute to Krauss, who is survived by his wife Elizabeth and seven children.

**Antelope Valley Press**

64th Year — No. 127      Tuesday, Feb. 26, 1980      16 Pages — Two Sections

More Antelope Valley People Read The Valley Press Than Any Other Newspaper      Price 15¢



**HEART ATTACK CLAIMS DR. KRAUSS** — This was the scene in the Sunnydale School parking lot Monday morning after Dr. John Krauss, who was driving the car at upper right, apparently suffered a fatal heart attack, losing control of his vehicle. — valley press photo

## Wrightwood principal dies in weekend skiing accident

A ski accident Saturday morning claimed the life of Wrightwood Elementary School Principal Thomas Jefferson Thorne, 54, who had been on an outing with his three children at Holiday Hill Resort.

With his daughters, Bonnie, 17, Tracy, 13, and son, Brien, 11, Thorne were skiing on Sawmill Slope area when they took a wrong turn downhill. When they realized their mistake, the elder Thorne decided to try to continue down the slope. He hit a patch of ice, fell, and skidded

over a cliff facing a creek.

Bonnie took off her skis to try to reach her father, but also skidded on the icy slope, and fell.

Then Brien climbed the hill to notify the Holiday Hill Ski Patrol which responded and found the elder Thorne dead at the bottom of the hill, apparently of massive head injuries and a broken neck.

A sheriff's helicopter was called to transport the body to the Coroner's office, and his wife, Mary Lou, 46, was notified of his

death.

Mr. Thorne had served as principal of the Wrightwood Joint School District since 1966. Enrollment now numbers about 330.

A requiem mass will be held at 11 a.m. Thursday, Feb. 28, at Our Lady of the Snows Catholic Church, Wrightwood. The Rev. Father John Keleghan will perform the mass.

Mr. Thorne was considered one of the community's outstanding civic leaders and was active in the Lions Club.